

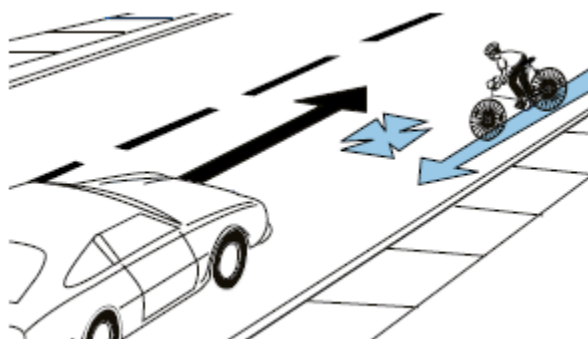


Facts and Fiction about cycling

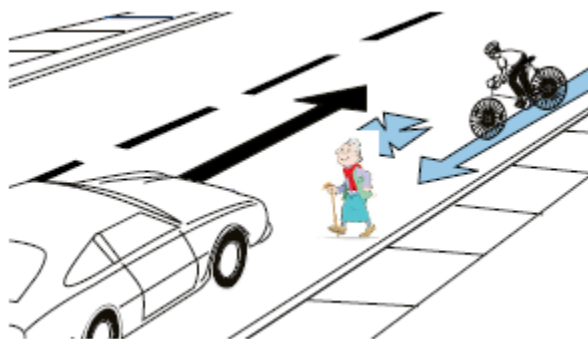
On which side of the road should I ride?

Fact or Fiction, you are safer if you ride facing traffic rather than with traffic? **FICTION!**

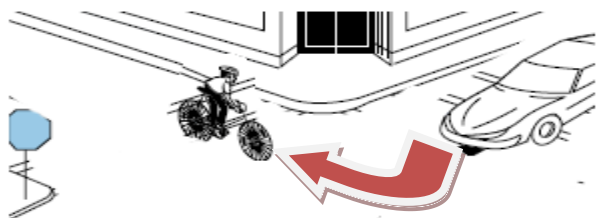
While you might think you are safer, because you can see the cars that are approaching you, in reality you put yourself and others at risk by riding against traffic. Remember you are a vehicle so consider the following:



When traveling in the wrong direction a car driver is not expecting to find traffic moving towards them. This confusion reduces the driver's ability to react as they adjust to the unusual situation. In fact a driver will have more time to react if you are traveling in the same direction! If the car is moving at 40 mph and you at 15 mph there is 1.5 seconds of extra time for every 100 feet of distance. And that is extra time to react to an EXPECTED situation verses 1.5 fewer seconds to react to an UNEXPECTED one.



A second reason you should travel with traffic is that you are a vehicle, and as such you are a potential hazard to pedestrians. At some point while riding against traffic you will most likely overtake a pedestrian from behind, and they will not know you are there! Worse yet, if you are overtaking a pedestrian from behind while a car is approaching them from the front, YOU have just created a very hazardous situation for everyone.



The third reason for not riding against traffic is that traffic signs, signals and other traffic indicators face towards oncoming traffic, but even more important is that a car making a right turn, onto the street where you are riding the wrong way, might not see you until it is too late

So on which side of the street should you ride? The right side of the street is the right side of street!